

INTRODUCING



# SmileMore

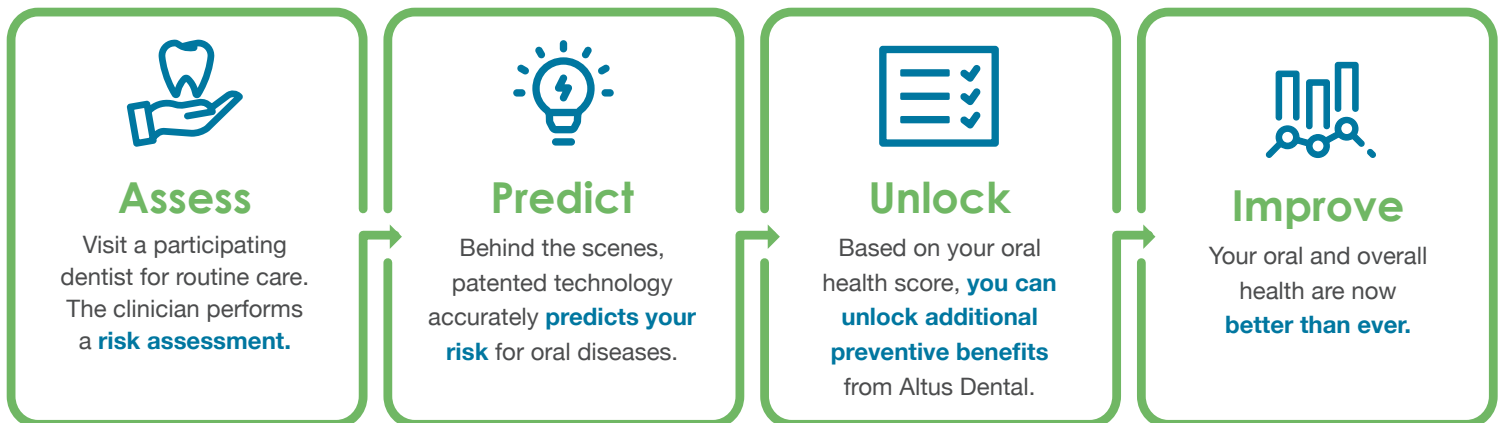
powered by PreViser®

## Extra Dental Benefits For At-Risk Patients

Altus Dental has partnered with PreViser, an industry leading oral health assessment tool, to bring you SmileMore.

The SmileMore program is a proactive approach to maintaining oral wellness. With SmileMore, you will receive a customized oral health score that will help determine your risk for future diseases like caries, periodontal disease and oral cancer. To determine your risk level, a participating dentist will perform an oral health risk assessment using a web-based clinical risk assessment tool during a routine visit. A score will be delivered in real time that will help determine the additional benefits that you are eligible to receive from Altus Dental.

### How does SmileMore work?



### Why SmileMore?

- Approximately 91% of adults ages 20-64 have caries on at least 1 permanent tooth\*
- 70% of adults age 65+ have some form of periodontal disease\*
- 1 in every 5 cases of oral cancer occurs in patients younger than 55\*

\* "Periodontal Disease." Centers for Disease Control and Prevention, Centers for Disease Control and Prevention, 10 July 2013  
[www.cdc.gov/oralhealth/conditions/periodontal-disease.html](http://www.cdc.gov/oralhealth/conditions/periodontal-disease.html)

For more information on the Altus Dental SmileMore program, contact your employer.